



KONICA MINOLTA

Print controller Prodigy 1050



Prodigy 1050

Power in black-and-white

The essentials of imaging

Maximising productivity

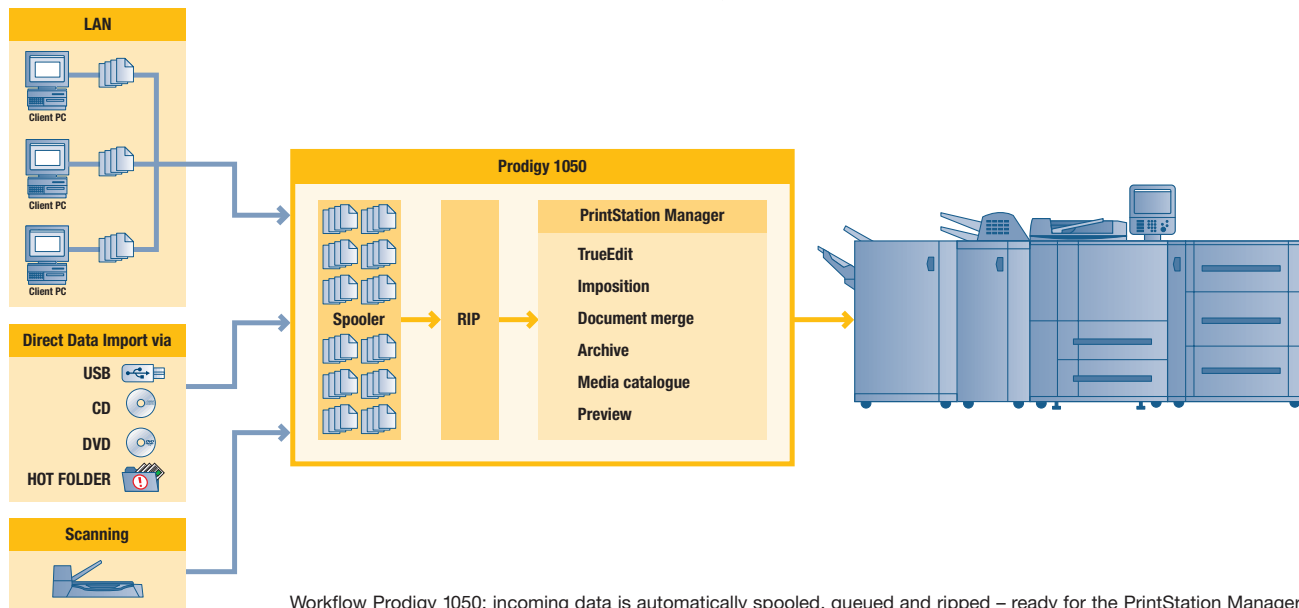
→ Reaping the benefit

This ideal central job management tool maximises the benefits of the bizhub PRO 1050. Large companies, corporate departments, print-for-pay shops and production printing firms will definitely enjoy remarkable returns using this latest development, which is the result of the successful collaboration between Konica Minolta and EFI and is based on the MicroPress technology.

Supporting and enhancing all the impressive functions and options of the bizhub PRO 1050, the print controller Prodigy 1050 is the perfect interface between user and printer, being both intuitive and user-friendly. Enjoying a central pivotal role, the key operator is empowered to efficiently, effectively and flexibility manage and monitor the complete print workflow. The PrintStation Manager provides a whole range of options for Document Make-Ready including the suites TrueEdit and Truelmage.

Of particular note is that the PrintStation Manager operates entirely with documents in ripped format. This ensures compatibility and enhances the versatility and speed of the whole operation.

Print controller Prodigy 1050 – optimal workflow control and pure printing flexibility.



Workflow Prodigy 1050: incoming data is automatically spooled, queued and ripped – ready for the PrintStation Manager.

Better than some would prefer

bizhub PRO 1050

➔ Quality high volume printing and finishing

The superb digital bizhub PRO 1050, backed by state-of-the-art Konica Minolta technology, is the backbone of any production printing environment. It provides professional quality printing at a remarkable speed coupled with exceptional versatility and reliability.

The impressive modular system concept means that whatever your requirements are, there is a bizhub PRO 1050 configuration to suit your needs.

The bizhub PRO 1050 sharpens your competitive edge and provides an unmatched price-performance standard.

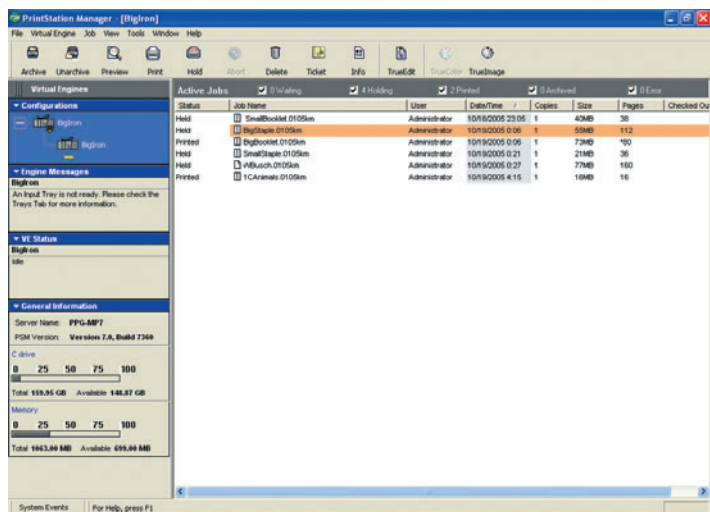
The bizhub PRO 1050 is a workhorse

- Up to 105 prints per minute, 6,300 sheets per hour
- Up to 1.5 million prints per month for the maximum duty cycle
- Up to 300 g/m² for one-sided and up to 244 g/m² for two-sided
- Up to 9,000 sheets paper feed and up to 10,000 sheets output capacity
- Extensive, versatile finishing features e.g. booklet – up to 50 sheets with trimming

Enjoy maximum productivity with professional precision, control and image quality! The bizhub PRO 1050 is an investment which delivers immediate returns.



PrintStation Manager with quality, flexibility,



PrintStation Manager

The PrintStation Manager is the control tool for all print jobs and is designed to maximise productivity. With it the key operator enjoys a truly capable pivotal role.

Included are exceptionally extensive, straightforward document make-ready options together with TrueEdit and TrueImage. A complete monitoring service of the output devices, including the specific indication of hold-ups (e.g. lack of paper or toner), is also provided. This enables the key operator to maintain an overall view of the status of all aspects of the entire production process and thereby to respond immediately to irregularities. This is a great time-saver.

The Graphical User Interface (GUI) is intuitive, extremely user-friendly and the learning curve incredibly short.

The PrintStation Manager deals entirely with ripped data. This produces these essential major benefits:

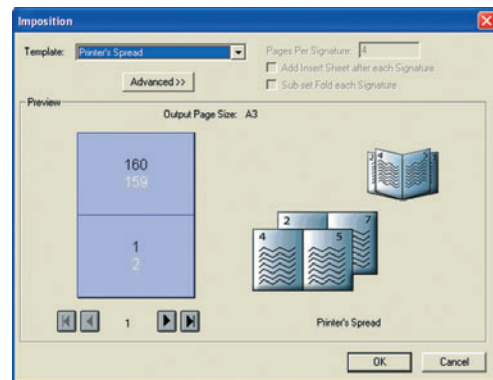
- Compatibility between different sets of data (e.g. Word, QuarkXPress, PDF) is assured. This is particularly advantageous for merging and editing of documents.
- Printing can take place immediately once the data has been edited and/or processed.

efficiency

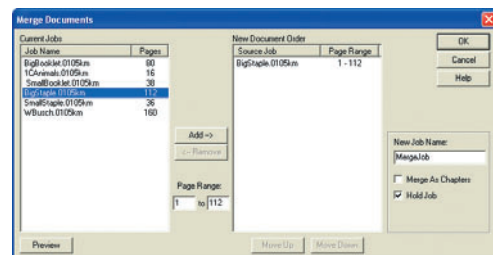
➔ Document Make-Ready

An extensive range of options designed to streamline document production and finishing.

- **Imposition** – The following imposition templates are available: booklet, perfect bound, stack and repeat, cut and marry and double mint as well as user defined. After the document is essentially finished the Imposition template is selected and the PrintStation Manager automatically prepares the arrangement of pages for printing.
- **Document merge** – As all documents are in the ripped form they can be combined at will. This is a remarkable benefit and enables the key operator to speedily produce the required new documents without needing to consider compatibility. For example, a new document can be produced from components created by different applications.
- **Page numbering** – The addition of numbers to pages – generally required after merging and editing.
- **Archive** – For the freeing of valuable storage space and the optimisation of print job organisation each print job can be stored where it is required. Further flexibility is achieved with the use of the PDF format or other formats.
- **Forms** – Insertion of personalised and/or variable specific data onto a basis of a particular form.
- **Media catalogue** – The five magazines for paper input are internally pre-determined. There is of course the option to introduce new media. The key operator needs only specify the media required and the PSM automatically selects the correct magazine.



Imposition



Document merge

- **Preview** – The presentation of the print job page by page on the screen.
- **Annotations** – The annotated form of the document enables the key operator to use the search function to locate particular document(s).
- **OCR** – The optical character recognition is the process used for the preparation of the annotations.



The full treatment

TrueEdit

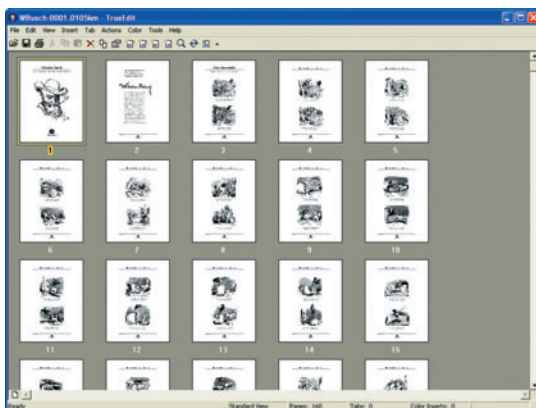
➔ Full view and refinement

At the heart of TrueEdit is the first class preview function. This tool has the power to display the whole document or any particular part of the document on the screen, naturally including thumbnails at page level to indicate each finishing decision. The key operator can then immediately edit at page level or organise the whole or any specific part of the document. The preview function is pure versatility at a mind-boggling speed.

Further major benefits of using only ripped data soon become obvious with the application of TrueEdit. The available editing tools are very effective, fulfil all needs and are operated with amazing speed and ease. The complete independence from the original application and author means the key operator can concentrate entirely on the quality of the document.

TrueEdit includes the following functions

- Adding text to a page
- Adding graphical elements to a page
- Removing contents
- Inserting tabs
- De-skewing and de-speckling
- Deleting pages of a document
- Reordering pages within a document



TrueEdit

The final touch

TrueImage



→ Print quality and versatility

These user-friendly options are available for the fine-tuning of the following processes in order to maximise print quality. Each change can be saved and is then applied to all subsequent ripping of documents in the respective category.

■ TrueCurve

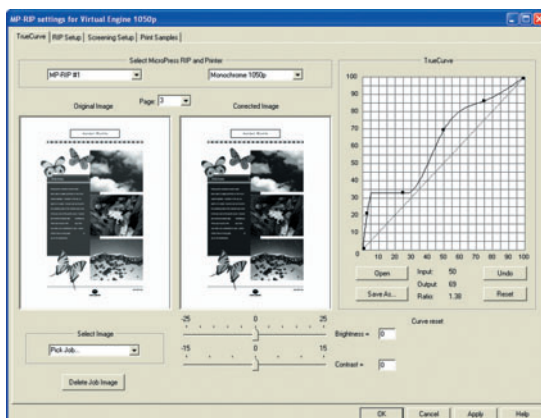
This is particularly beneficial for the improvement of photographs, and other graphical elements. Throughout the adjustment process the effects of the changes can be viewed on screen alongside the original. As well as contrast and brightness sliders there is the completely versatile, graphically displayed toner curve to evenly adjust toner coverage in particular parts of the document.

■ Screening setup

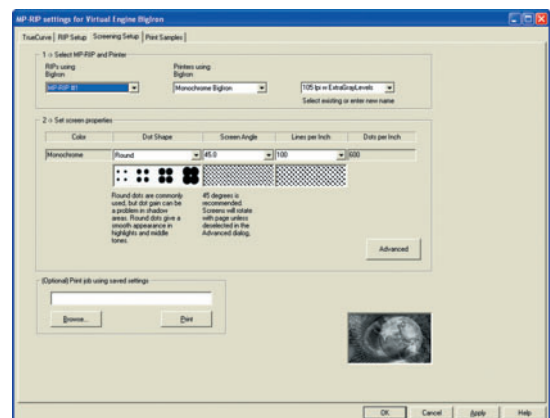
LPI, dot shape and raster angle play an important role in the quality of digital printing. Screening setup is an intuitive and straightforward tool so that the key operator can experiment with various settings for each of the three in order to maximise the quality of the finished product.

■ RIP setup

Easy adjustment of the RIP via the user-friendly GUI.



TrueCurve



Screening setup



KONICA MINOLTA



bizhub PRO

Technical specifications

Prodigy 1050

Hardware

Supported devices

bizhub PRO 1050

Type

External

CPU

Intel Pentium IV @ 3.4 GHz

Memory

1,024 MB

Hard disk

160 GB SATA

Interface

2x 1000-Base-T Ethernet

Print specification

Page description language

Adobe PostScript 3

PCL 5

Operating systems

Windows 98/ME/NT4.0/2000/XP

Mac OS 9.x/10.x

Job management

PrintStation Manager

Media Catalog

Archiving

Some of the product illustrations contain optional accessories.

Konica Minolta does not warrant that any prices or specifications mentioned will be error-free.

Specifications are subject to change without notice.

Microsoft, Windows and the Windows logo are trademarks, or registered trademarks of Microsoft Corporation in the United States and/or other countries.

All other brand and product names may be registered trademarks or trademarks of their respective holders and are hereby acknowledged.

Printed in Germany on chlorine-free bleached paper.

Your Konica Minolta Business Solutions Partner:



Konica Minolta
Business Solutions Europe GmbH
Europaallee 17
30855 Langenhagen • Germany
Tel.: +49 (0) 511 74 04-0
Fax: +49 (0) 511 74 10 50

